

INCLINOMETER PROBE INCLIS DH

*The new inclinometer probe INCLIS DH, designed by Solgeo, allows to perform a set of measurements of **direction and inclination of the boreholes in the 3D space**. INCLIS DH embodies a magnetometric and an accelerometric sensors threesome. In case of iron casing pipes which could annoy magnetometric sensors, is also provided a properly system composed by a set of driven poles. INCLIS-DH at the surface is linked with an **USB control box** which provides both power supply and real time data transfer to the PC. Elaboration software SOLCLINO allows an instantaneous delivery of results acquired along borehole, showing its altimetric and planimetric trend.*

INCLINOMETER PROBE INCLIS DH

La nuova sonda INCLIS DH di fabbricazione Solgeo, permette di realizzare un rilevamento **tridimensionale della deviazione** di perforazioni aventi una **qualsiasi direzione ed inclinazione nello spazio**. La sonda contiene al suo interno una terna magnetometrica e una terna accelerometrica. In situazioni in cui i rivestimenti metallici della perforazione possono disturbare i sensori magnetometrici, la sonda viene dotata di un sistema di supporto e puntamento per mezzo di aste guida. INCLIS-DH In superficie è collegata ad un **box di comando USB** che provvede sia alla alimentazione sia al trasferimento in tempo reale dei dati ad un personal computer. Software di elaborazione che permette un'immediata restituzione dei risultati e dei grafici con gli andamenti planoaltimetrici del foro.

Instrument

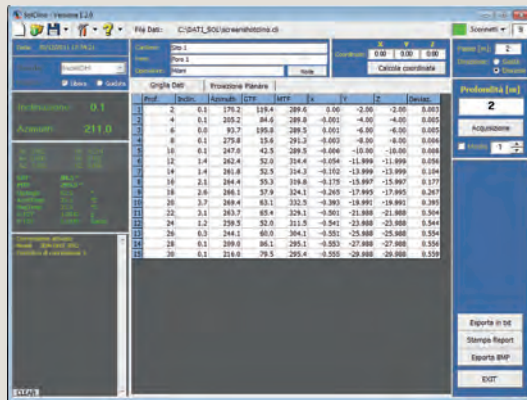
INCLIS DH

INCLINOMETER PROBE



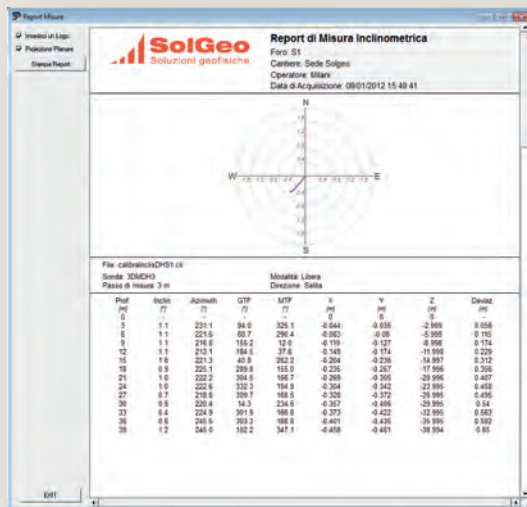
PROBE CHARACTERISTIC

Dimensions	200 cm x 40 mm diameter
Weight	4 Kg
Operating temperature	- 40 °C to 125 °C (-10 °C to 125 °)
Connectors	Souriau 200 bar IP69
Shock limit	500 g
Enclosure material	brass
Software	Windows XP, Vista, 7
Digital output	USB 2.0
Voltage supply	Directly from USB



INTERNAL INERTIAL SENSORS

Orientation range	360° about all axes (orientation angles); inclination, azimuth, GTF, MTF, Dip Angle
Accelerometer range	24 bits accelerometer; 16 bits magnetometer
Angle resolution	0.02°
Accuracy	± 0.2° inclination ± 0.5° azimuth
Angle measurement repeatability	0.1 °
Digital output rate/logging rate	up to 8 Hz
Internal Communication	acceleration and magnetic field vectors plus temperature; orientation angles plus temperature
Output modes	temperature; orientation angles plus temperature
Digital output	RS-422 serial (four-wire full-duplex) standard
Serial data rate	115200 baud
Datalogging capacity	up to 32,768 data records
Supply voltage	+6.0 VDC min, +10.0 VDC max
Supply current	50 mA typical when connected to host 16 mA typical when logging at 8Hz 500 µA typical when logging at 1/4 Hz 50 µA typical in deep sleep mode



SOLGEO S.r.l.
Via Pastrengo, 9 - 24068 Seriate (Bergamo) - Italy
Tel. +39 035 4520075 - Fax +39 035 4523705
info@solgeo.it - www.solgeo.it